



---

**Thank you for coming!**

For ongoing project and closure details, visit:

**[www.75rougeriver.com](http://www.75rougeriver.com)**

Follow project highlights at:

**[www.twitter.com/75rougeriver](http://www.twitter.com/75rougeriver)**

or

**[www.facebook.com/75rougeriver](http://www.facebook.com/75rougeriver)**

or **call us** at 313-407-0705

## PHASE 3 – Spring 2018 - Fall 2018

- **Rehabilitate 11 Downriver bridges:**
  - » NB I-75 over Northline Road
  - » SB I-75 over Northline Road
  - » NB I-75 over Allen Road
  - » SB I-75 over Allen Road
  - » NB I-75 over Eureka Road
  - » SB I-75 over Eureka Road
  - » SB I-75 over the US-24 (Telegraph Road) connector ramp
  - » NB I-75 over the Blakely Drain
  - » SB I-75 over the Blakely Drain
  - » NB I-75 over the GTW Railroad
  - » SB I-75 over the GTW Railroad

## PHASE 2 – Summer 2017 - Fall 2018

- **Replace** pavement and sewers along 2 miles of I-75 from Springwells Street to Clark Avenue in southwest Detroit
- **Work** from project PHASE 1 continues

## PHASE 3 – Spring 2018 - Fall 2018

- **Rehabilitate 11 Downriver bridges:**

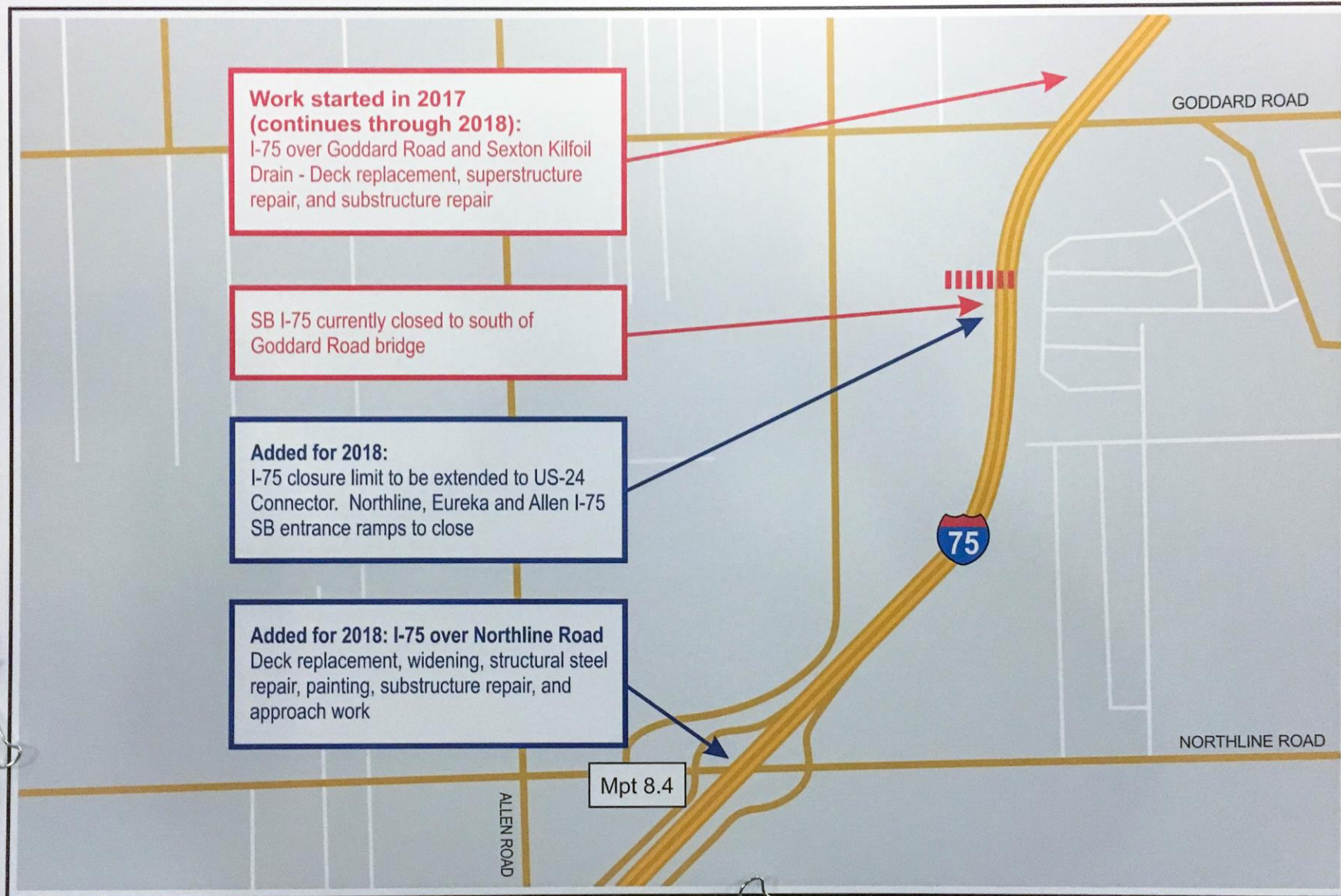
- » NB I-75 over Northline Road
- » SB I-75 over Northline Road
- » NB I-75 over Allen Road
- » SB I-75 over Allen Road
- » NB I-75 over Eureka Road
- » SB I-75 over Eureka Road
- » SB I-75 over the US-24 (Telegraph Road) connector ramp
- » NB I-75 over the Blakely Drain
- » SB I-75 over the Blakely Drain
- » NB I-75 over the GTW Railroad
- » SB I-75 over the GTW Railroad
- » Northbound I-75 from Detroit Avenue to Porter Avenue sound wall rehabilitation

## The project will:

- **Replace I-75 bridge deck** over Rouge River and Fort Street **50% COMPLETE**
- **Replace I-75 bridge** over Goddard Road and Sexton-Kilfoil Drain **50% COMPLETE**
- **Rehabilitate I-75** between Springwells Street and Clark Avenue **50% COMPLETE**
- **Rehabilitate** 11 Downriver bridges

**Total Project Cost: \$220 Million**

*Wayne County*



**I-75 Rouge River | City of**  
2018 Co

repair, painting, substructure repair, and approach work

Mpt 8.4

ALLEN ROAD

**Added for 2018: I-75 over Northline Rd.**  
Deck Replacement, Widening, Structural Steel Repair, Painting, Substructure Repair, Approach Work  
2018 Construction

NORHLINE ROAD

Mpt 8.4

ALLEN ROAD



**Added for 2018: I-75 over R02-1 NB & R02-2 SB**  
Deck Patching, Epoxy Overlay, Railing Repair, Structural Steel Repair, Painting, Substructure Repair  
2018 Construction

**Added for 2018: I75 over Eureka Rd**  
Deck Replacement, Widening, Structural Steel Repair, Painting, Substructure Repair, Approach Work  
2018 Construction

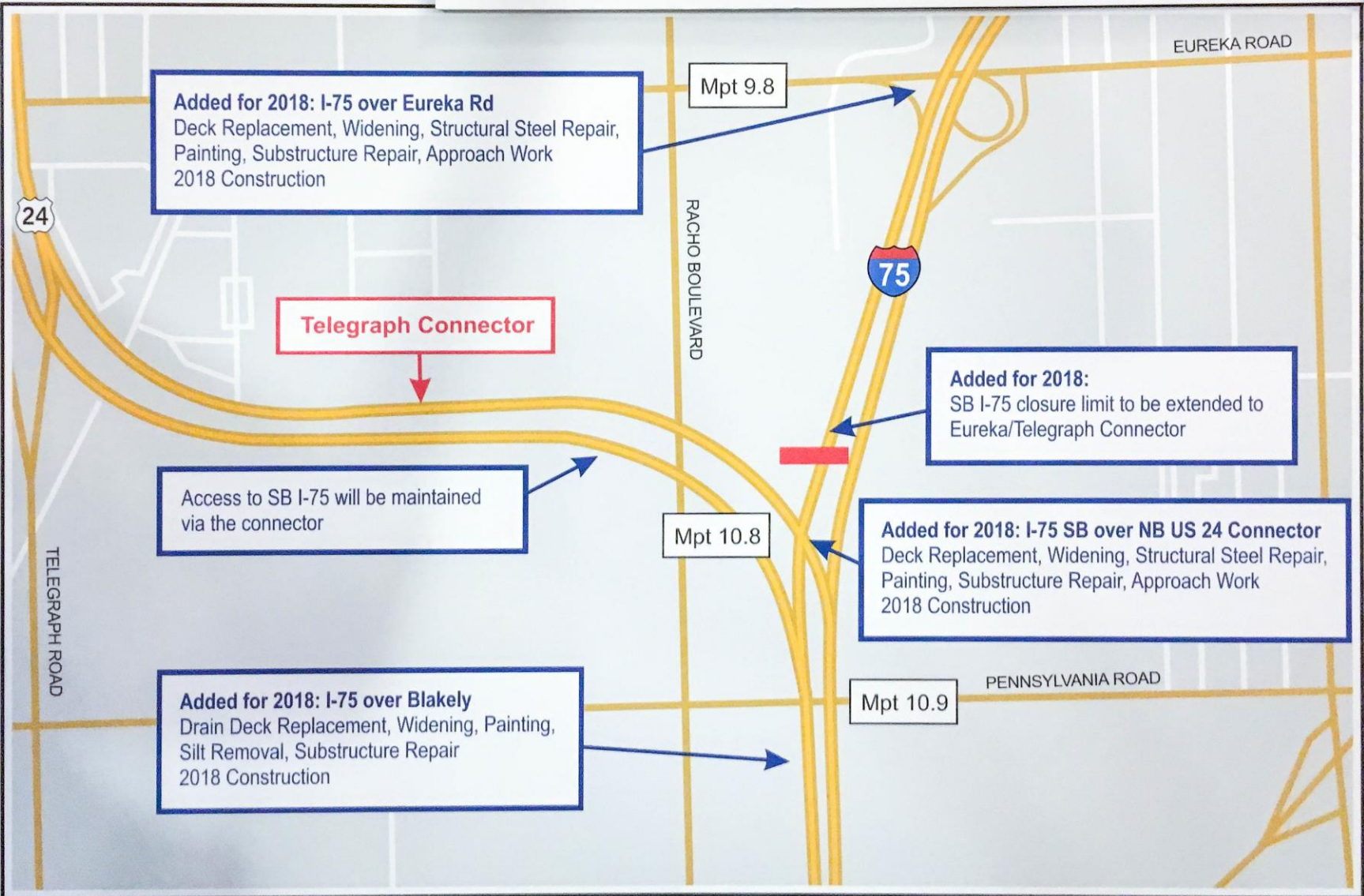
EUREKA ROAD

Mpt 9.3

**Added for 2018: I-75 over Allen Rd.**  
Deck Patch, Healer Sealer, Joint Replacement, Railing Replacement, Structural Steel Repair, Partial Painting, Substructure Repair, Slope Protection Repair  
2018 Construction

Mpt 9.8

# I-75 Rouge River



**Added for 2018: I-75 over Eureka Rd**  
Deck Replacement, Widening, Structural Steel Repair, Painting, Substructure Repair, Approach Work  
2018 Construction

**Telegraph Connector**

Access to SB I-75 will be maintained via the connector

**Added for 2018: I-75 over Blakely**  
Drain Deck Replacement, Widening, Painting, Silt Removal, Substructure Repair  
2018 Construction

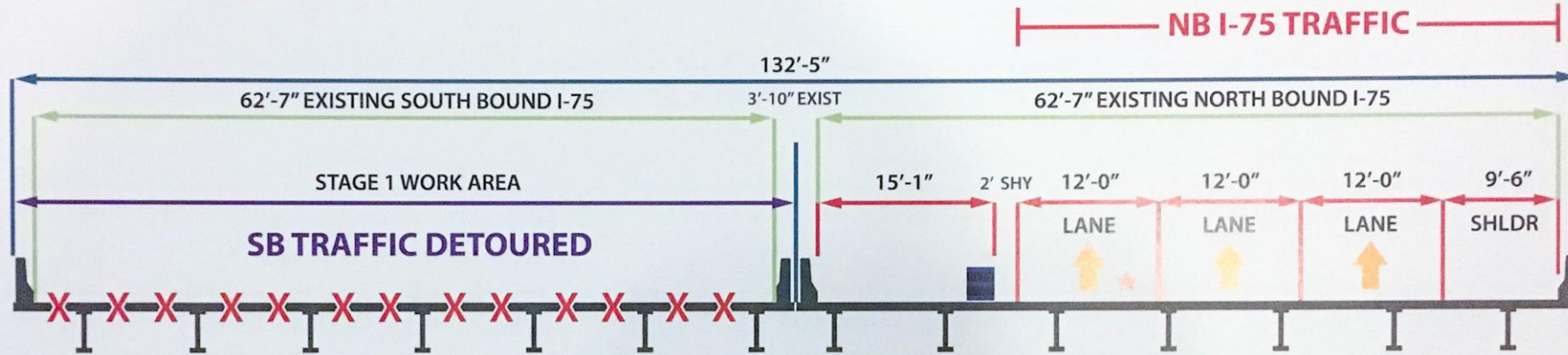
**Added for 2018:**  
SB I-75 closure limit to be extended to Eureka/Telegraph Connector

**Added for 2018: I-75 SB over NB US 24 Connector**  
Deck Replacement, Widening, Structural Steel Repair, Painting, Substructure Repair, Approach Work  
2018 Construction

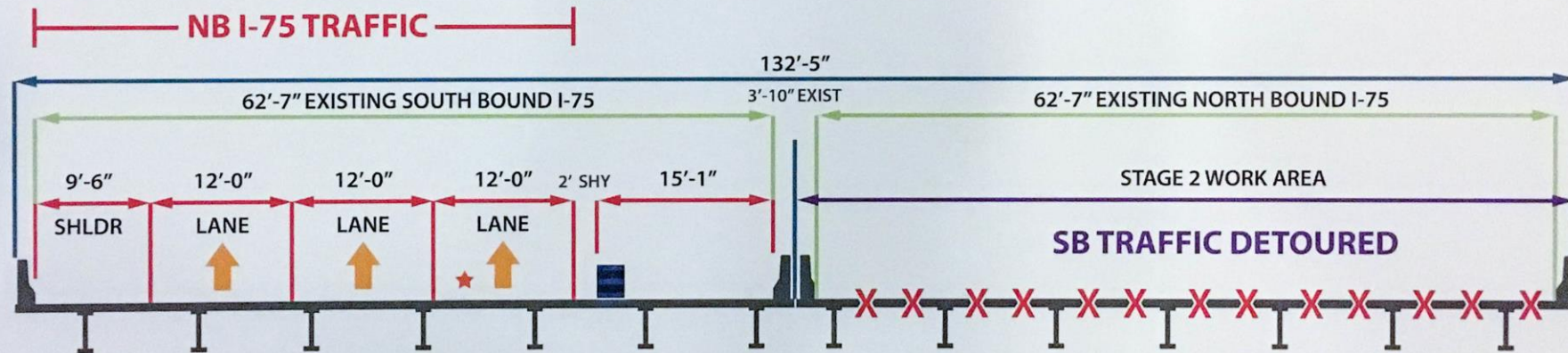




# Traffic During Construction



STAGE 1



STAGE 2

★ LANE MAY BE CLOSED AT NIGHT FOR CONTRACTOR ACCESS. PROVIDE 2' MINIMUM SHY DISTANCE BETWEEN TRAFFIC AND PLASTIC DRUM

# NB and SB I-75 Entrance Ramp Detours: I-75 From Schaefer Hwy to I-96

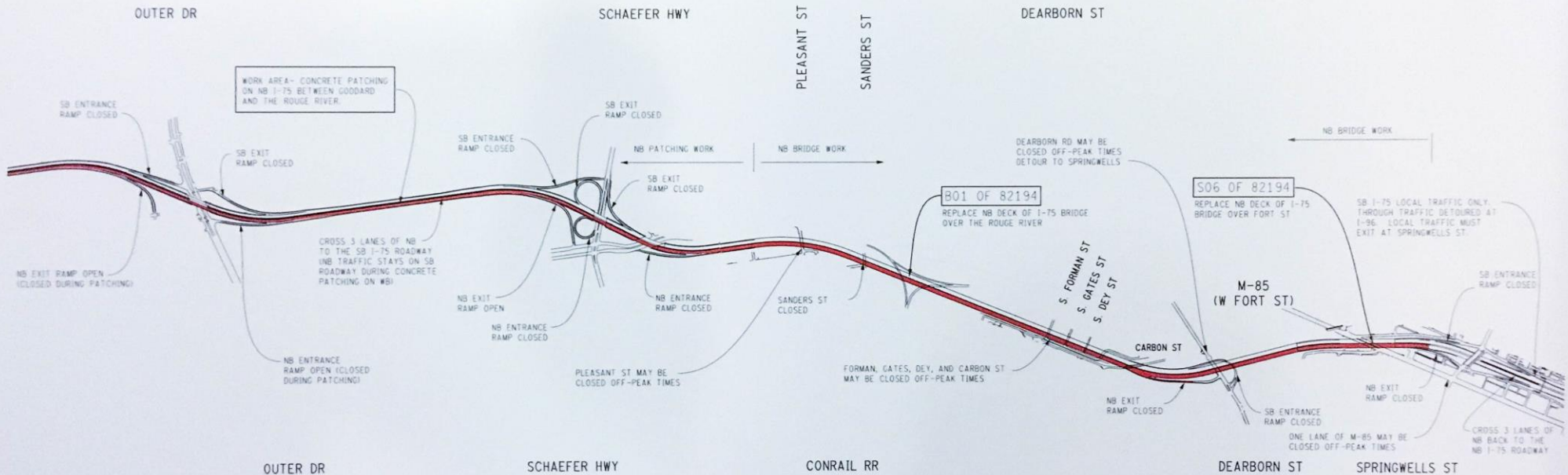


**NB TRAFFIC:**  
 MAINTAIN 3 LANES OF NB I-75 ON THE SB I-75 ROADWAY.

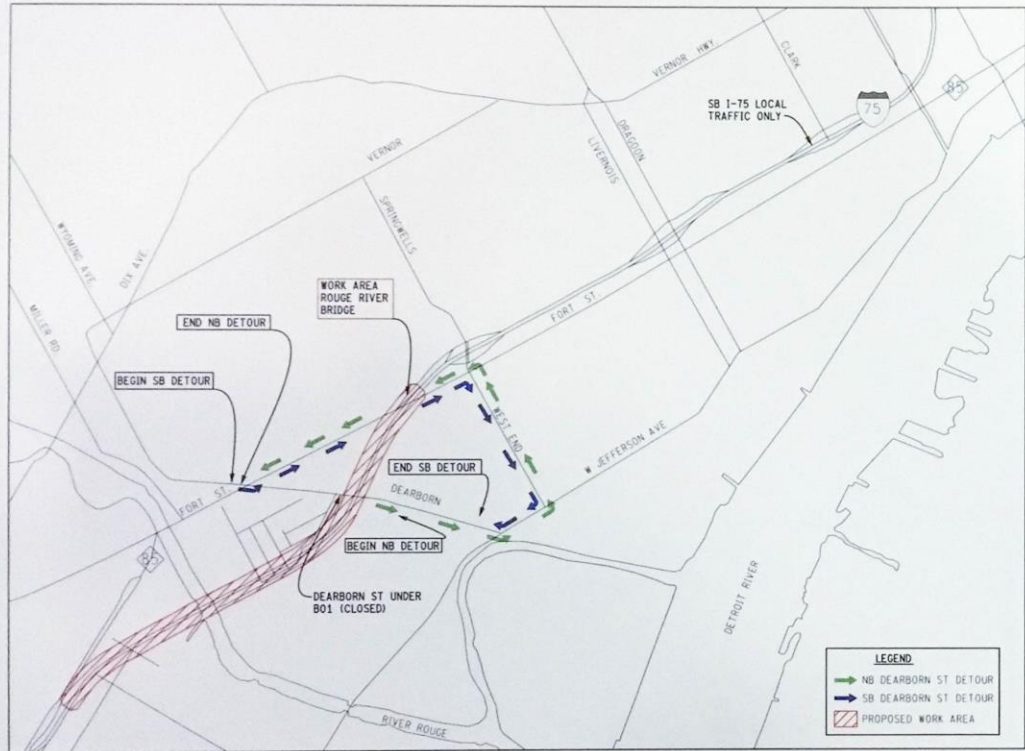
**SB TRAFFIC:**  
 SB I-75 CLOSED AT I-96 (DETOUR TRAFFIC WB I-96 TO SB I-275).  
 MAINTAIN LOCAL SB I-75 TRAFFIC TO SPRINGWELLS ST.  
 SB ENTRANCE RAMP DETOURED TO SB M-85 TO SOUTH OF GIBRALTAR.

**LEGEND**

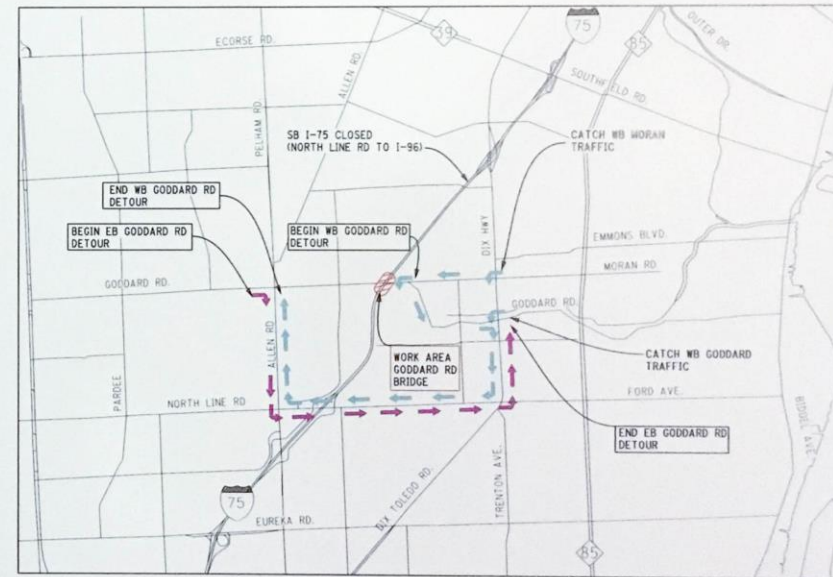
LIMITS OF PROPOSED WORK.



# Local Road Detours

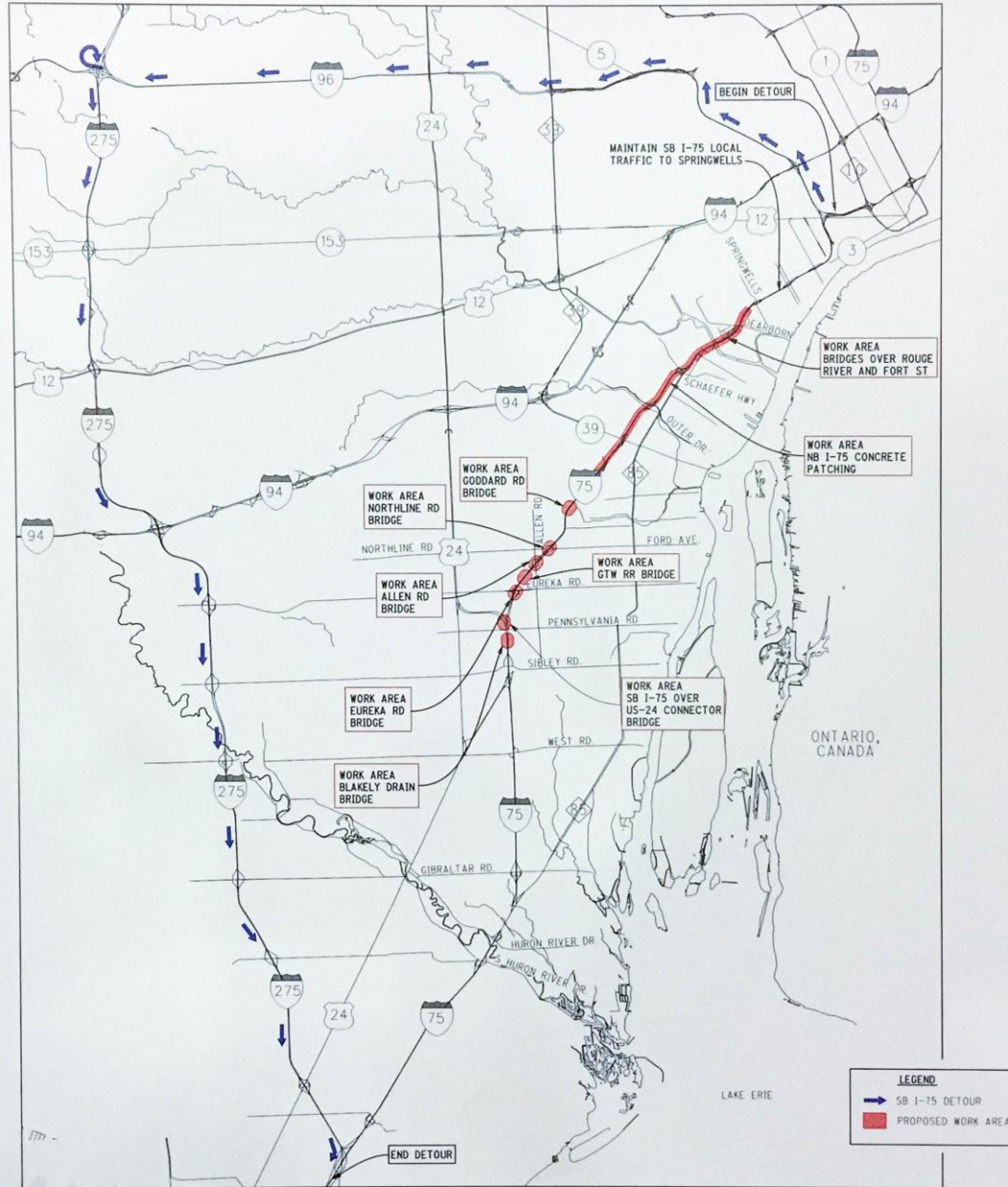


DEARBORN ST UNDER B01  
DETOUR



GODDARD RD UNDER I-75  
DETOUR

# 2018 Bridge Work During SB I-75 Freeway Detour



# Re-entry to Southbound I-75

